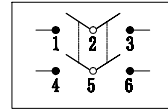


- 1、FUNCTION: ON-ON
ON-ON
- 2、RATING: UL: 250VAC 8A250VAC 10A125VAC
CQC: 6A/12A 250VAC
ENEC VDE: 6(4)A 250VAC μ T105
- 3、OPERATION FORCE: 650±350g.f
- 4、CONTACT RESISTANCE: ≤ 50 m Ω
- 5、INSULATION RESISTANCE: ≥ 100 M Ω
- 6、DIELECTRIC WITHSTAND:

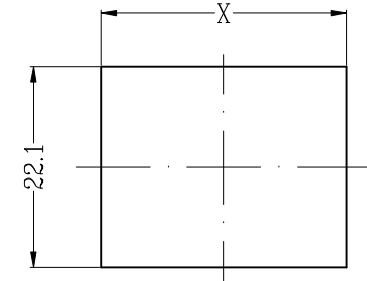
TERMINAL TO BUTTON 3000VAC/5mA/1MINTUE
TERMINAL TO TERMINAL 1500VAC/5mA/1MINTUE

- 7、CIRCUIT DIAGRAM:



- 8、SUGGESTED PANEL HOLE SIZE:

PANEL THICKNESS	DIM. X
0.75-1.25	19.2/19.1
1.25-2.0	19.4/19.3
2.0-3.0	19.8/19.7



PANEL CUT-OUT

